



PRODUCT CATALOG

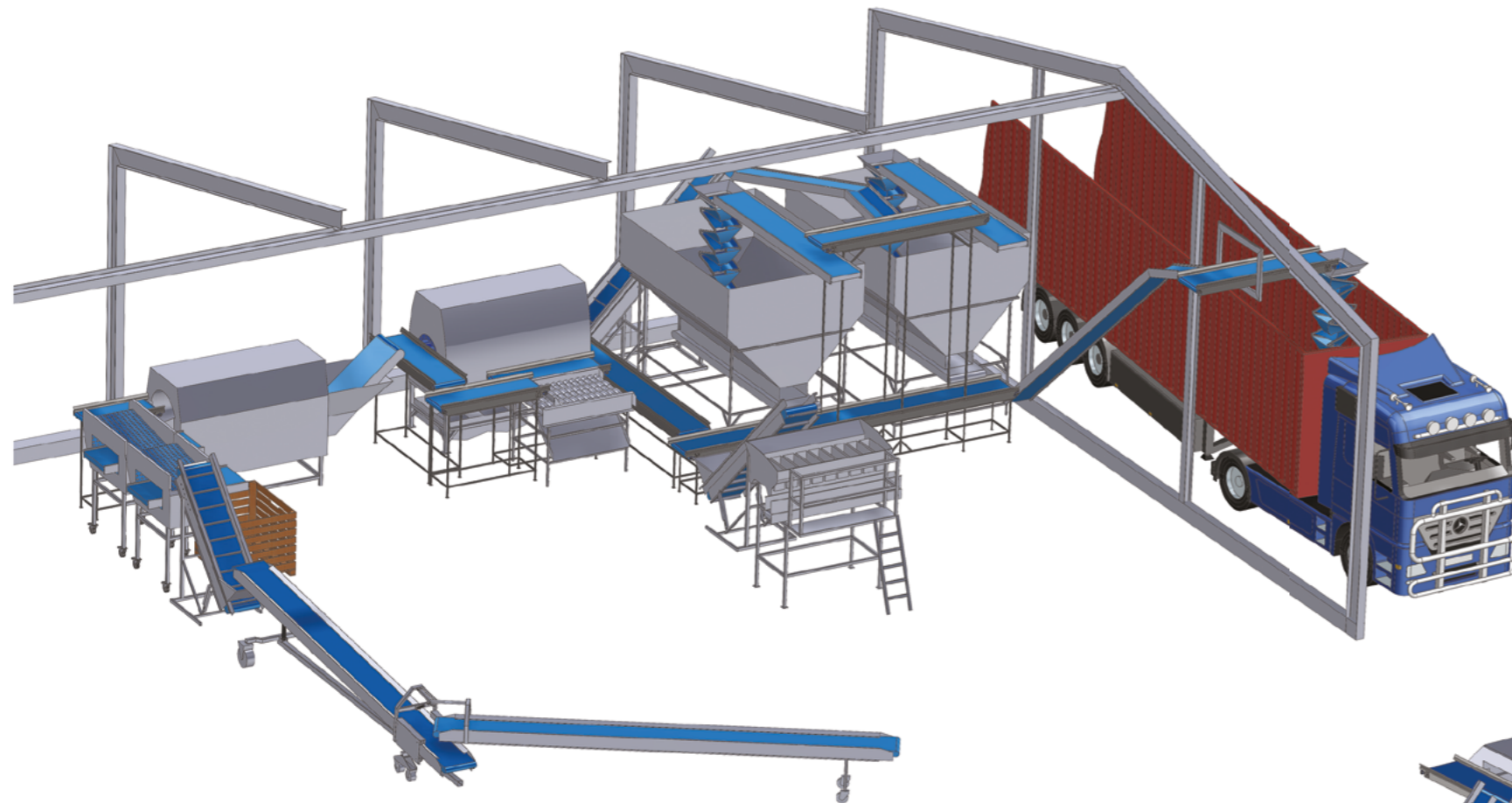
Technology for handling root vegetables

"Professionally and Comprehensively" - both of these concepts are particularly close to our company and have been accompanying us since we have entered the market. Today, after almost 10 years of working for vegetable producers, we are constantly looking for new solutions to provide you with optimal, most suited and the highest quality product.

Our professional approach is not just a slogan, but a goal, which we achieve every day. What makes us different is first and foremost quality, which we try to improve on a daily basis.

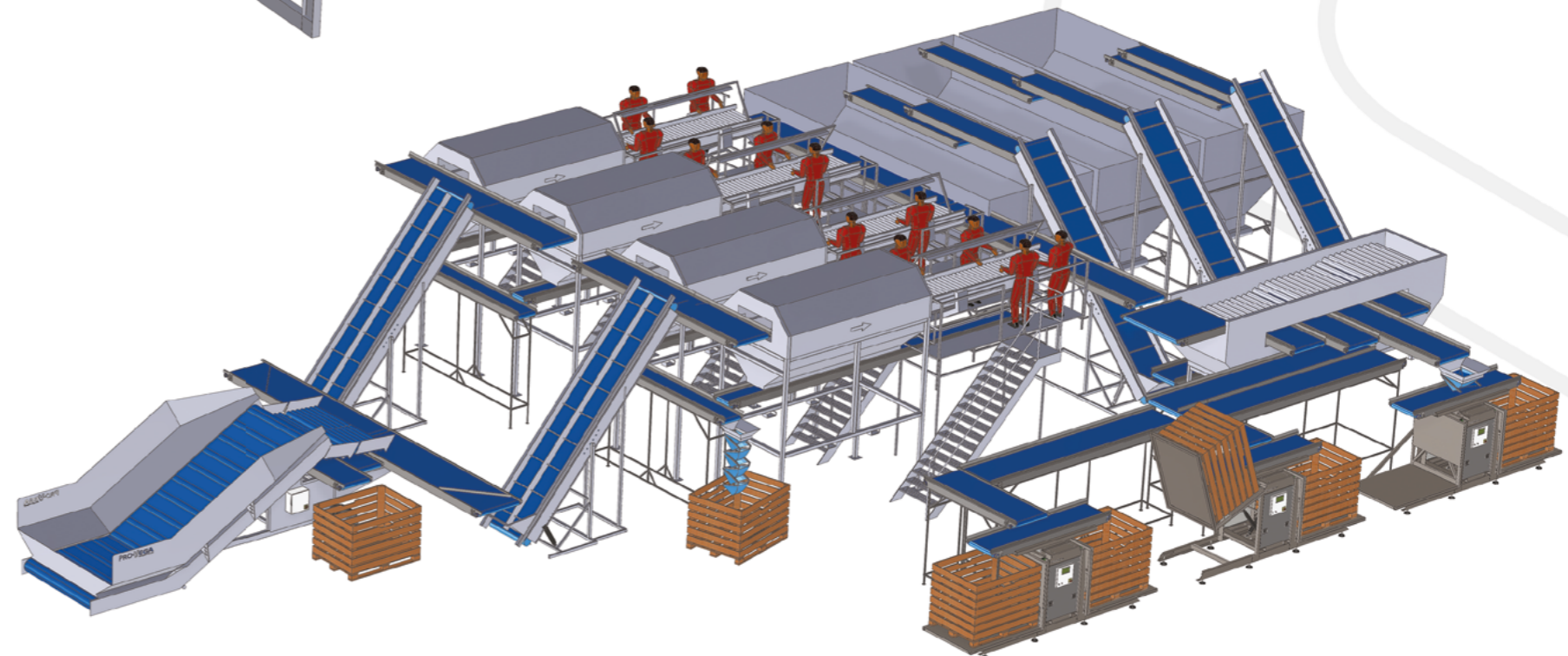
▶ PROCESS LINES

We have been designing and manufacturing process lines for packaging root vegetables since 2008. Work on a project starts with a concept of the line, which results in creating a dedicated process engineering design, including service lines for electricity, compressed air or water/sewage. We adapt our equipment to existing applications. We have specialised 3D software allowing us to visualise the line.



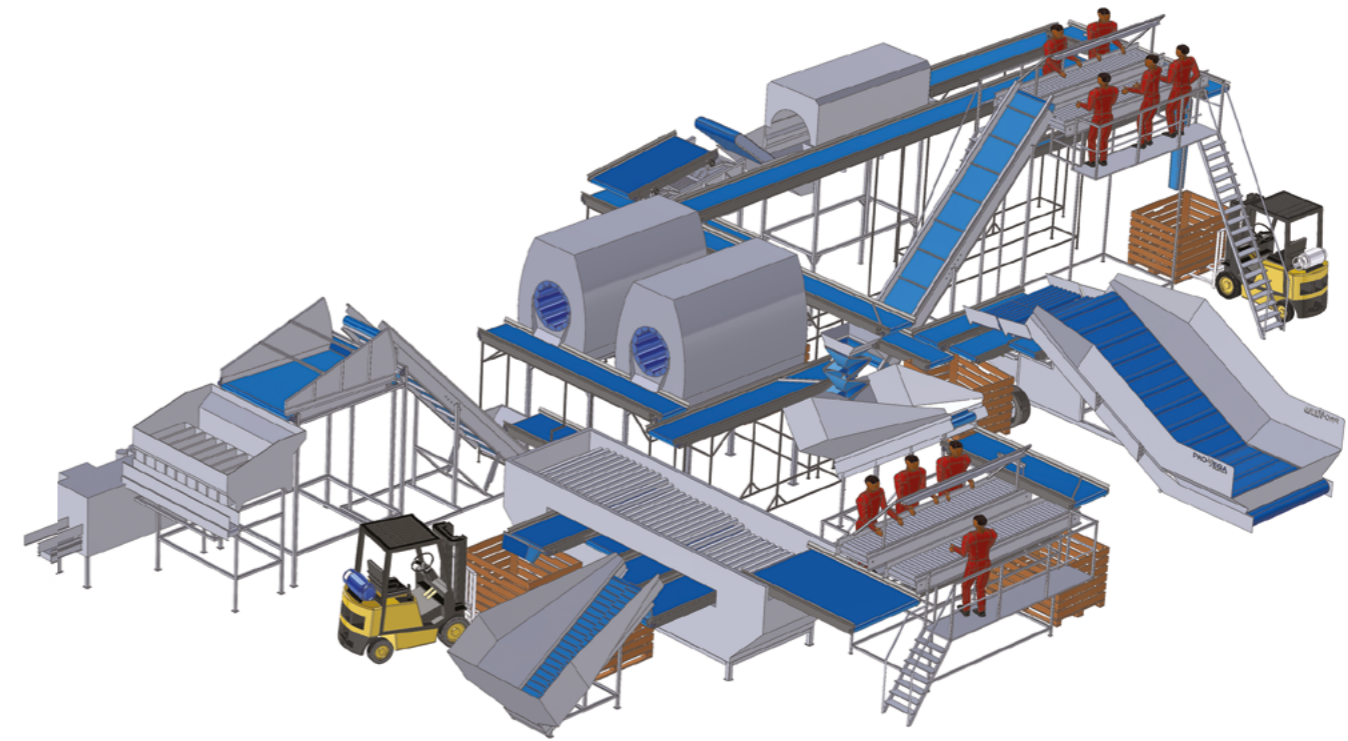
▶ PRO-LINE SERIES

For large vegetable farms or groups of vegetable producers, we offer lines made using the "PRO-Line" technology, intended for intensive and long-term computer-controlled operation at maximum capacity. The lines built using this technology are characterised by construction using high-strength metal sheet and components suitable for heavy and intensive working conditions. All machines can be made of ordinary steel S235 (painted in a professional painting chamber) or stainless steel.



▶ ECO-LINE SERIES

For small and medium-sized individual vegetable farms, we offer modular, comprehensive process lines with capacities up to 2t/h, based on machines from the ECO-Line series. An undoubted advantage of this series of machines is its relatively low price, while maintaining high quality and functionality for more expensive solutions. This has been achieved already at the design stage - the structures are simplified to the maximum, modular and repetitive, and the components used are dedicated to the required capacities.



WK | BOX TIPPER

Hydraulic tippler suitable for box pallets of different sizes. Depending on the version, boxes are inserted using a "pallet jack" or forklift truck (floor or legs). Installed capacity: 1.5-2.2 kW.



WK Series

For smaller box pallets (maximum width 1.6 m) - one central actuator, adjustable width of the working carriage. Tipping angle: 140°. Control panel with a 4m cable.

Available models: WK -1212, -1612



WK2 Series

For intensive work with larger box pallets - two side actuators, automatic operation (process controlled by a sensor system). Tipping angle: 140°. Wired control panel or wireless remote control.

Available models: WK2 -1212, -1612, -2012, -2412



WKC Series

For all box pallets, increased tipping angle - two side actuators, automatic operation (process controlled by a sensor system). Tipping angle: 150°. Wired control panel or wireless remote control.

Available models: WKC-1212, -1612, -2012, -2412



WKD Series

With a dispensing function using a sliding top shutter - two side actuators, automatic operation (process controlled by a sensor system). Wireless remote control as standard, as well as a PLC and control panel controlling the process.

Available models: WKD -1612, -2012

RB | RECEIVING HOPPER



Receipt of raw materials from trailers with rear unloading or from box pallets. Main transporter - depending on the version, PVC belt with chevron cleats (for the 1.6 m width) or floor with a chain drive (floor width of 2m and above available). Stepless speed control and ADC - automatic dispensing correction (sensors correcting the belt speed depending on the amount of raw material). Single or dual separation system - 6 or 13 rollers with receiving conveyors. Self-cleaning function of the separation system for options with speed adjustment.

Available models:

- For PVC belt: RB -1240, RB -1640
- For a chain drive: RB -2040, -2060, -2460

System with one separator:

- G6: rubber stars, fixed spacing and working angle,
- SP7: polyurethane spirals, fixed angle, adjustable spacing 3-50mm
- R7: INOX pipes, fixed angle, adjustable spacing 3-50mm (depending on tube diameter)

System with dual separator:
Pre-separator G6/SP6/R7 plus:

- SP7: polyurethane spirals, adjustable working angle, shaft spacing 7-100mm
- R7: INOX tube, adjustable working angle, shaft spacing 7-100mm
- B7: polyurethane discs, adjustable working angle, shaft spacing 7-100mm

KRD | UNLOADING BIN



Unloading root vegetables and legumes (for the version with an additional de-clumping adapter) from trailers with side and rear tipping. Working transporter with special design - roller chain and steel sections with a belt covered with PVC coating.

Available models: special order.

ZSD | DOSING HOPPER



Unloading box pallets from a tippler or truck rotator. Rod belt (rods coated with rubber) with T50 scrapers; working angle 40-45°. Adjustable belt speed using a variator or optionally an inverter. It is possible to suspend the SWG/SWS/SWR soil separator and receiving conveyors for waste and raw materials on hopper construction. Operating capacities: 1.1m³ | 1.3m³ | 1.6m³

Available models: ZSD -514, -615, -716

BRS | DOSING BUNKER



Unloading box pallets from a tippler or truck rotator. PVC belt with cleats in a "V" arrangement, working angle 20-25°. Adjustable belt speed using a variator or optionally an inverter. It is possible to suspend the SWG/SWS/SWR soil separator and receiving conveyors for waste and raw materials. Operating capacities: 2.35m³ | 2.75m³ | 4m³ | 4.5m³ | 5m³.

Available models: BRS -727, -927, -845, -1045, -1245



ZSB | BUFFER HOPPER



The device buffers vegetables before the packaging process. The buffer basket is installed above the conveyor belt. A relief roof is located above the conveyor. The outlet cover has an adjustable gap. Operating capacities: 1.5 - 20m³

Available models: special order.

ZBF | "EVEN-FLOW" BUFFER



The device is designed for uniform dispensing of raw material into devices requiring precise, uniform feeding of raw material, e.g. weighers. It serves as a buffer and at the same time a precise product dispenser, which aligns and stabilises the movement of raw material between the transporting device and the receiving device. Operating capacities: 1.2m³ | 1.6m³ | 2.0m³

Available models: ZBF -927, -1227, -1527

WDL | STONE SEPARATOR



Mechanical separation of stones using a water vortex as the working medium. Raw material, after the removal of stones and lumps, is received by the product belt, waste falls onto the auxiliary belt, which carries it to the side. The central grease distribution system for bearing rollers of rod belts is immersed in a water pool. The stone separator can be installed as part of the MBWL drum washer. Capacity above 30t/h.

Available models: WDL-20

SWG | SOIL EXTRACTOR



For pre-separation of soil and other waste from vegetables. The working element is rubber stars mounted in the form of active shafts. The machine can be a stand-alone device or as an element of bunkers and dispensing containers. As an option, speed control of working elements: inverter or variator is available.

Available models: SWG -508, -510, -710, -713

SWS / SWR | SOIL SEPARATOR



For initial sorting and separation of soil and other waste from vegetables. The working element is the spring shafts made of polyurethane (PU), steel (S) or smooth steel pipes (SWR) with adjustable spacing within the range. The machine can be a stand-alone device or as an element of bunkers and dispensing containers.

Available models: SWR/SWS -508, -510, -710, -713

SN | LEAVES SEPARATOR



Receipt of leaves and other waste from root vegetables. The working element is the "hedgehog" belt with adjustable working angle and speed. The device is available as "free-standing" as well as a system component - e.g. installed on a stone separator.

Available models: SN -812, -1212

MBWL | DRUMMER WITH STONE SEPARATOR



Industrial drum washer for washing potatoes and root vegetables and simultaneous separation of stones and lumps. Especially recommended for raw materials for industrial purposes. Adjustable speed of the drum and receiving belts. Automatic removal of mud during operation - valves opened pneumatically, adjustable intervals of operation (requires compressed air). Capacity up to 50t/h.

Available models: MBWL -1215, -1230, -1240, -1250

MB / MBL | BARREL WASHING MACHINE

A perforated drum made of stainless steel suspended and driven by V-belts. An adjustable shutter is installed between the drum chamber and the receiving conveyor chamber. A running water sprinkler is installed in the washing drum and above the conveyor.



MB
Manual removal of mud (cleanout doors on the side of the machine).



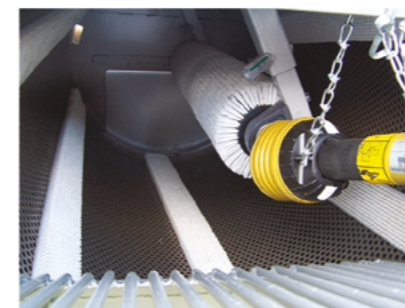
MBL
Automatic removal of mud during operation - valves opened pneumatically, adjustable intervals of operation; requires compressed air.

MBZ | DRUM WASHER WITH MUD REMOVER



Industrial drum washer for washing potatoes and root vegetables intended primarily for food processing. Equipped with a scraper conveyor, receiving mud on an ongoing basis during the washing process. Capacity up to 50t/h.

Available models: MBZ -1230, -1240, -1250



MB/MBL-.WS

Additional, active brush roller in the drum.

Available models:
- „800“ Series : MB/MBL -815, -820, -825 | capacity: 0.5-5t/h
- „1000“ Series: MB/MBL -1300, -1400 | capacity: 2-20t/h

ORF | ROLLER FELT DRYER



The working element is the rollers with a special, highly absorbing unwoven fabric receiving moisture from the surface of the vegetables. The lower roller assembly presses the water out of the unwoven fabric. Adjustable operating speed is available.

Available models: ORF -810, -1010, -1210, -1015, -1215

MV | BARREL POLISHER

Rotary brush shafts in the form of a counter-rotating drum. Vegetables are sprayed with recycled and fresh water from sprayers inside the drum. Segmental design of brush shafts (10cm segments) ensures free selection of the brush hardness; clumps with a 8mm diameter guarantee a long service life of the brushes. Simplicity and functionality at the highest level.



MV

V2 version: painted structure, INOX covers and contact elements, wired control panel, recycling; as an option, the entire machine can be made of INOX. Capacity: 1-12t/h.

Available models: MV -1220(R), -1224(R), -1424(R), -1428(R), -1628(R)



MV-E

ECO version: painted structure, galvanised covers, INOX contact elements, recycling. Capacity: 1-6t/h.

Available models: MV -E1220(R)

MW | U-BARREL POLISHER



Rotary brush shafts in a "U" layout - so-called "tub layout", brushes with variable direction of rotation and variable speed. Running water sprayer inside the tub. Optionally - water recycling. Capacity up to 2.0t/h.

Available models: MW -E719(R), -E919(R)

MK | CRADLE POLISHING MACHINE



Rotary brush shafts in a "U" layout with additional drum rocking function, intensifying accuracy and efficiency. Brushes with variable direction of rotation and variable speed. Running water sprayer. Optionally - water recycling. Max. capacity 2-4t/h.

Available models: MK -E919(R), -919(R)

WS | BRUSHER



Dry vegetable brushing - vegetables are pressed to brush rollers using a PVC jacket. Corrugated brush in the standard version. Optionally, a top brush panel with adjustable degree of pressure. Max. capacity 1-8t/h.

Available models: WS -610, -1010, -1210, -1214

PRS/PRS2 | SELECTION ROLLER TABLE

Transport and manual selection. The working element is rotating stainless steel tubes. Stepless speed adjustment and lighting for the working section. Service platforms, waste channels and an additional conveyor to receive waste (PT or PD) as optional accessories.

- Available width: 0,8 m | 1,0 m | 1,2 m
- Available length: 2,0 m | 2,5 m | 3,0 m | 3,5 m | 4,0 m



PRS Series

System allowing for ongoing cleaning of the space between the upper and lower lines of rollers - the roller opens automatically under the passive shaft.



PRS2 Series

Lowered lower line of rollers eliminates the deposition of waste on the passive shaft.

PTS | BELT INSPECTION TABLES



Transport and manual selection. PVC belts. Stepless speed adjustment (variator) and lighting for the working section. Service platforms, waste channels and an additional conveyor to receive waste (PT or PD) as optional accessories.

Available models: special order

PT | BELT CONVEYORS



PVC or polyurethane belts, also approved for contact with food. Depending on the purpose and size of the device, material is carried on rollers or slides.

Available models: special order

PD | DOSING CONVEYORS



PVC belts with cleats up to 150mm in height. Work on steel or polyurethane slides or on runners. Modular design allows the construction of any length of the conveyor.

Available models: special order

VPT | DUAL CONVEYOR



Belt conveyors with articulated connection transporting vegetables and potatoes. The conveyors are connected on a fixed coupling (fixed filling point) or a sliding coupling (variable filling point). Chassis on running wheels. Speed adjustment using a variator (optionally inverter).

Available models: VPT -660, -680, -6100

VPD | DOSING CONVEYOR



Multi-purpose devices for transporting vegetables, for example, for loading trailers and big bags, forming piles, etc. Rubber belt with cleats in a V layout (belt cast). The design of the side with a "pitched end" on a wheeled chassis, height adjustable with a hydraulic cylinder (working angle up to 35°). Speed adjustment using a variator (optionally inverter). Maximum height of feed (depending on model): 1.8-4.0m.

Available models: VPD -555, -565, -595

ST | MESH SORTING MACHINE



Sorting of potatoes and round vegetables. Raw material smaller than the size of the openings in the sorting mesh belt falls on the cross conveyor, and the rest is transported further. An eccentric tamper is installed below the sorting grid. It is possible to combine sorting machines into sorting units. The size of the mesh to be arranged. Standard receiving conveyor PT820.

Available models: ST -920, -1220

VS | LENGTH GRADER



Purpose: sorting of carrots in terms of length or separation of halves. The working element is the system of vibrating, profiled sorting trays with adjustable spacing. Reception of raw material by additional belt conveyors. The device is made in a 1-, 2- or 3-grade + additional grade version.

Available models: VS -212, -312, -315, -415

RS | ROLLER GRADER

Sorting of root vegetables in terms of diameter. The working element is rotating stainless steel tubes with adjustable spacing for each grade. A brush continuously cleaning the tubes during operation. The receiving conveyors of the device are adapted to customer needs. The device is made in a version for 3-5 grades with working width from 800 to 2000mm (HZ1 version).



RS-E Series

ECO version. Sorting range 17-90mm, receiving conveyors B-600mm, length on request.

Available RS-E models: -x08, -x10, -x12 *
* x = number of grades (3 or 4)



RS-HZ1 Series

Reinforced version. Sorting range 20-120/30-130 - receiving conveyors B-800mm; sorting range 17-142mm, conveyors B-800mm; conveyor length on request.

Available RS-HZ1 models: -x10, -x12, -x15, -x20 *
* x = number of grades (3, 4, 5)

ONS | ONION TOPPER



The device is designed for pre-sale processing of onions - cutting off dried stems and removing loose scales. The working element is the vibrating rod grid, under which speed-controlled cutting blades spin at high speed. As an option, a waste conveyor can be installed under the machine and a support frame.

Available models: ONS -109, -209, -309

OBM2 | CARROT TOPPER



A triple-belt version with the possibility of automatic two-sided cutting. A carrot is feed to the centre belt, where staff receives the raw material and places it between the scrapers of side belts, which transport the raw material into the zone of rotating circular blades. Two-sided cutting uses two sections of cutting saws and a system of moving raw material under the section for cutting the other end. Optionally, return circulation system - unprocessed carrots are returned to the machine's hopper.

Available models: OBM2 -12T3P1, -8T3P2

NSP | FILLING MACHINE FOR BOX PALLETS



Single or double workstation, automatic filling of box pallets with raw material fed from the conveyor. The filling machine, using a sensor system, examines the level of filling of a box pallet and, after reaching a specified level, sends a signal that stops the filling process (single workstation) or reverses the direction of the loading conveyor (double workstation). Local control using a touch panel.

Available models: NSP -1612S, -1612D

NK | CASCADE FILLER



Single or double workstation filling of box pallets and big bags. A dosing conveyor coupled with a frame and a cascade chute for big bags. The filling process is controlled by a sensor system. A platform weigher is available as an option.

Available models: NK -645S, -650D

PLS | SEMI-AUTOMATIC PALLETIZER



Double-workstation platform with a conveyor supporting the process of manually stacking bags on pallets. Staff stacking the bags works on an electrically retractable platform, which facilitates stacking with increasing the level of bags on a pallet. After filling one workstation, the operator opens the chamber door and releases its side pressure to allow collision-free receipt of a full pallet.

Available models: PLS -200

SP | PACKAGING TABLE



A rotary table for buffering packets before manually stacking in boxes or other containers. For the SP-O version, the table is equipped with a discharge tube for waste - waste is sent underneath onto an additional conveyor. Adjustable table speed. Stainless steel.

Available models: SP-15



PRO-VEGA
www.pro-vega.pl

ul. Małszyce 9A
99-400 Łowicz

email: biuro@pro-vega.pl
phone: +48 46 811 55 22

